

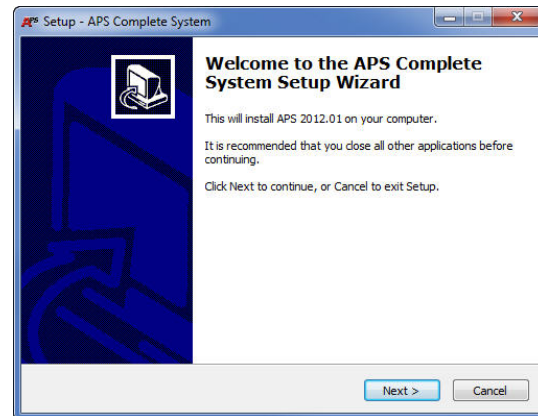
## Installation Steps:

1. Download and Install APS
2. Download and Install OpenDCL (AutoCAD 2012 using APS Layer Schemes only)
3. Configure the AutoCAD paths
4. Load the APS menu files
5. Exit AutoCAD, reopen it, and configure the APS software

### 1. Download and Install APS

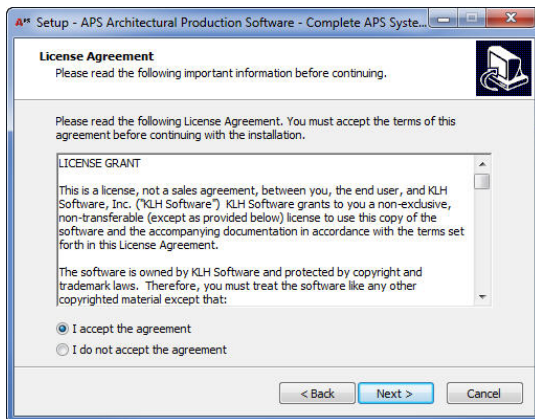
- a. Download the executable file from our website. If you have any trouble with downloading your file please email us at [Deployment@KLHSoftware.com](mailto:Deployment@KLHSoftware.com).
- b. If AutoCAD is open, close it.

- c. Run (double click) the file downloaded from our website. If you are using one of the newer Windows operating systems your screen will go dark and you will see a "User Account Control" window that states that "An unidentified program wants access to your computer" or something similar. Press "Allow" to continue. (We won't bite) You should see something similar to the following. Yours will be slightly different depending on what version and/or package of our software you are installing.



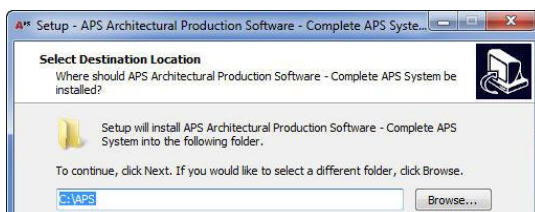
Click **Next >**

- d. The KLH Software End User License Agreement will be displayed.



Read the license agreement, check that you accept it and click **Next >**.

- e. The default installation folder is "C:\APS".

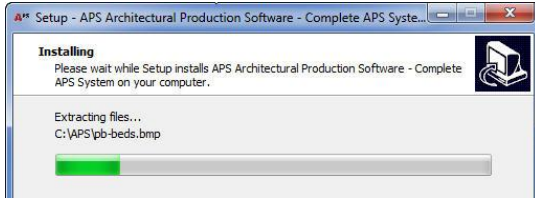
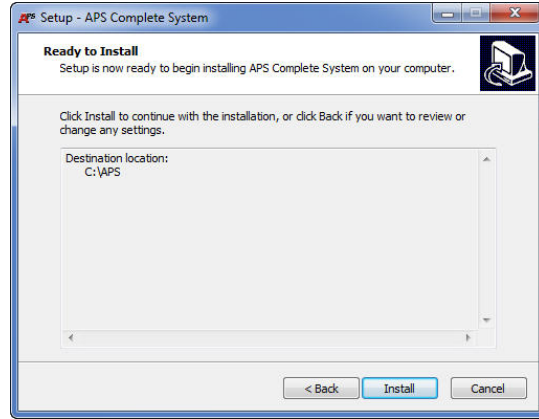


We recommend this folder as there have been security and file access problems when using the "Program Files" folder. Click **Browse...** if you want to change the installation folder and then **Next >** to proceed.

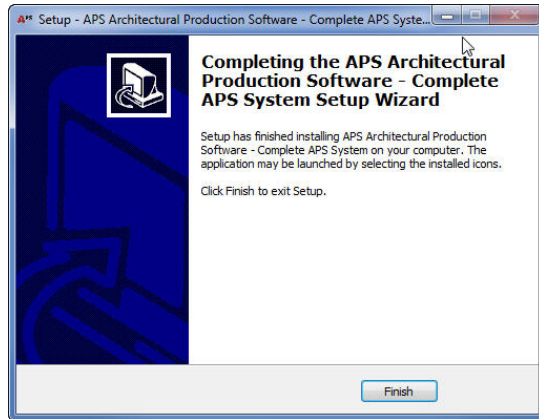
f. If the path looks correct.

Press **Install**.

g. The software installs to the selected folder.



h. When finished installing you will see a screen similar to the following:



Press **Finish** to complete the installation.

## 2. Download and Install OpenDCL. (AutoCAD 2012 using APS Layer Schemes only)

If you are using AutoCAD 2012 and would like to manage your layers by using the APS screen menu system you will need to download OpenDCL. Autodesk has discontinued the side screen menu in release 2012 and made this workaround necessary to maintain the functionality that many users have come to rely on.

- Go to the OpenDCL website:  
<http://www.opendcl.com/download/>
- Download the English "Stable Build" of "OpenDCL Studio"

By downloading the "Studio" version of the software you will be able to modify the location of the items in the menus (move buttons etc.).


- Install the OpenDCL software. The OpenDCL software registers itself with AutoCAD automatically.

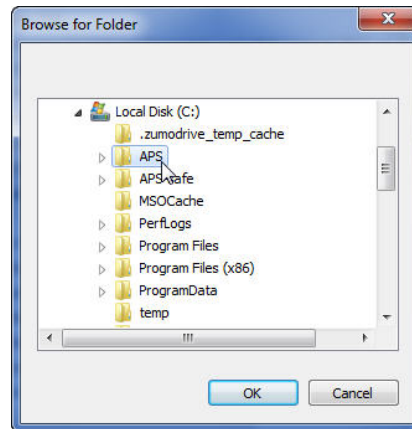
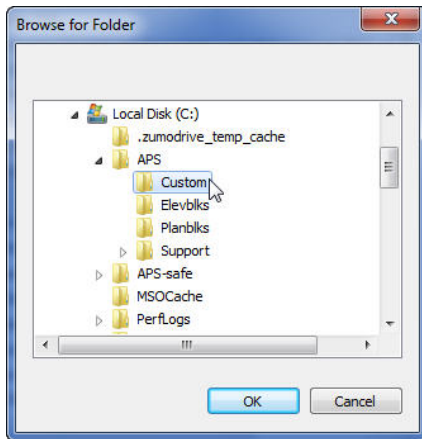
### Welcome to the OpenDCL download page

**OpenDCL Studio**  
(If you're new to OpenDCL start here. The Studio is where you create & edit your dialog boxes. It will also install the runtime.)

<b>Stable Build [6.0.2.5]</b> (The stable build has all the known bugs worked out, but may not be as up-to-date as the current build.)	<b>Current Build [6.0.2.5]</b> (The current build is always under development. It is where we add new features for testing. It's usually very stable, but may contain a few bugs.)
<a href="#">English</a>	<a href="#">English</a>
<a href="#">German</a>	<a href="#">German</a>
<a href="#">Chinese</a>	<a href="#">Chinese</a>
<a href="#">Spanish</a>	<a href="#">Spanish</a>
<a href="#">French</a>	<a href="#">French</a>
<a href="#">Russian</a>	<a href="#">Russian</a>

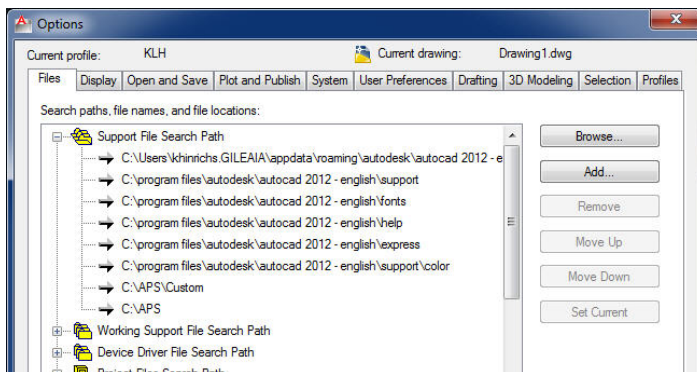
### 3. Configure the AutoCAD paths.

- Open AutoCAD
- Click on the "A" () at the top left corner of AutoCAD then click on "Options" at the bottom.
- Click on the "Files" tab and then click on the "+" sign next to "Support File Search Path"
- Click on "Add", then "Browse"
- Select the "Custom" folder (under the APS folder):



- Press "Add" again, then "Browse" again. This time, select the main APS folder:

- When finished you should have two new paths similar to those shown below:

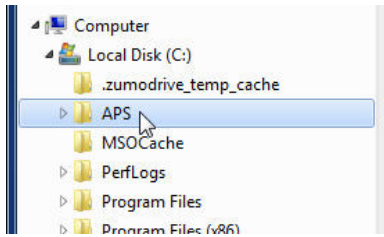


The order **IS** important so make sure to have the line with the "Custom" folder above the one with the main APS folder.

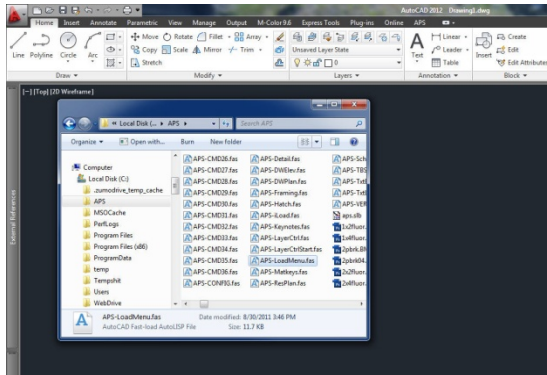
- When this is the case press "OK" to close out the Options dialog.

## 4. Load the APS menu file.

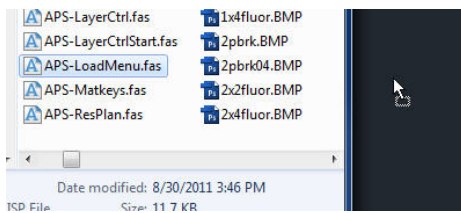
- a. While still in AutoCAD, open Windows Explorer and browse to the main APS folder:




- b. Position windows explorer in such a way that you can drag a file from it to the desktop in AutoCAD:



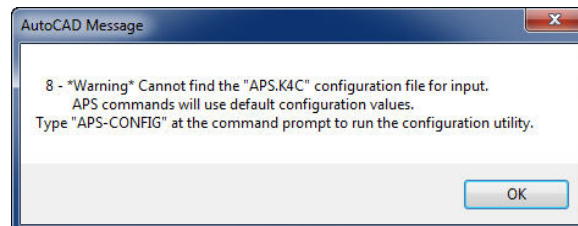
- c. In the file area find the “APS-LoadMenu.fas” file. Click on it and drag it to the AutoCAD screen area:



(if your cursor turns to a  when over AutoCAD instead of the cursor shown above you have a command active in AutoCAD and need to cancel it before doing this)

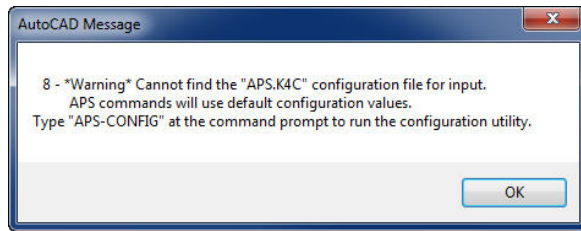
- d. The APS menus will load and you will see the following dialog:

This means that you don't have a configuration file. Don't worry you will create one below in section 5.



## 5. Exit AutoCAD, reopen it, and configure the APS software.

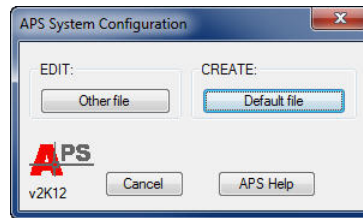
- Even though you can see toolbar buttons and other portions of the new APS commands some of the APS software is not fully loaded. Please get completely out of AutoCAD and then open AutoCAD up once again.
- You will probably see:  
again



This is normal. Press OK. We will take care of this next...

- Type in "APS-CONFIG" which will open the APS configuration utility.
- You will see the following dialog:

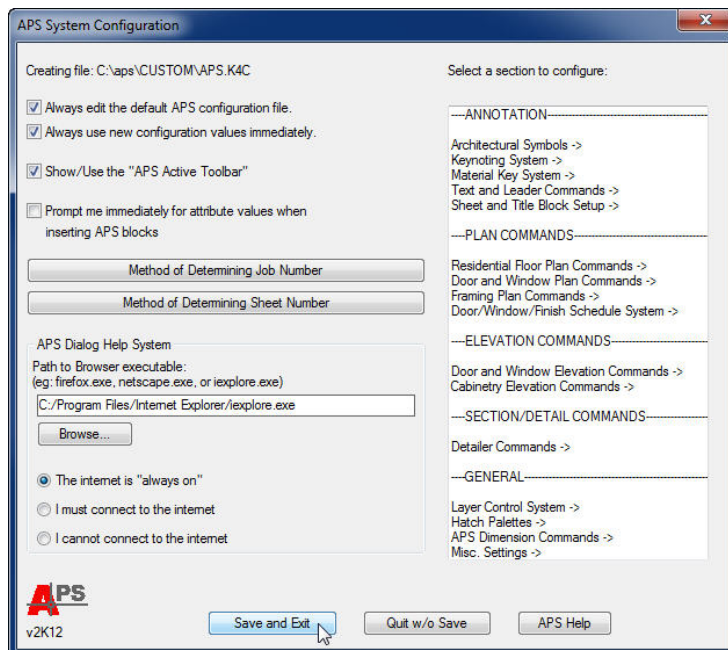
(This dialog just means you don't have a configuration file yet)



We will create your default configuration file now so press **Default file**

- While you could spend time now setting up all the APS software we recommend you just create your default file now and come back later to configure things further.

Press "Save and Exit" to save a configuration file. Please note the file location and name of the configuration file being created at the top-left corner of the dialog (shown below):



Now that you have a configuration file the commands should be fully loaded and ready for you to use.

For more in-depth instructions on configuring the APS software see:  
[http://www.klsoftware.com/users\\_manual/aps-config/aps\\_configuration.htm](http://www.klsoftware.com/users_manual/aps-config/aps_configuration.htm)